



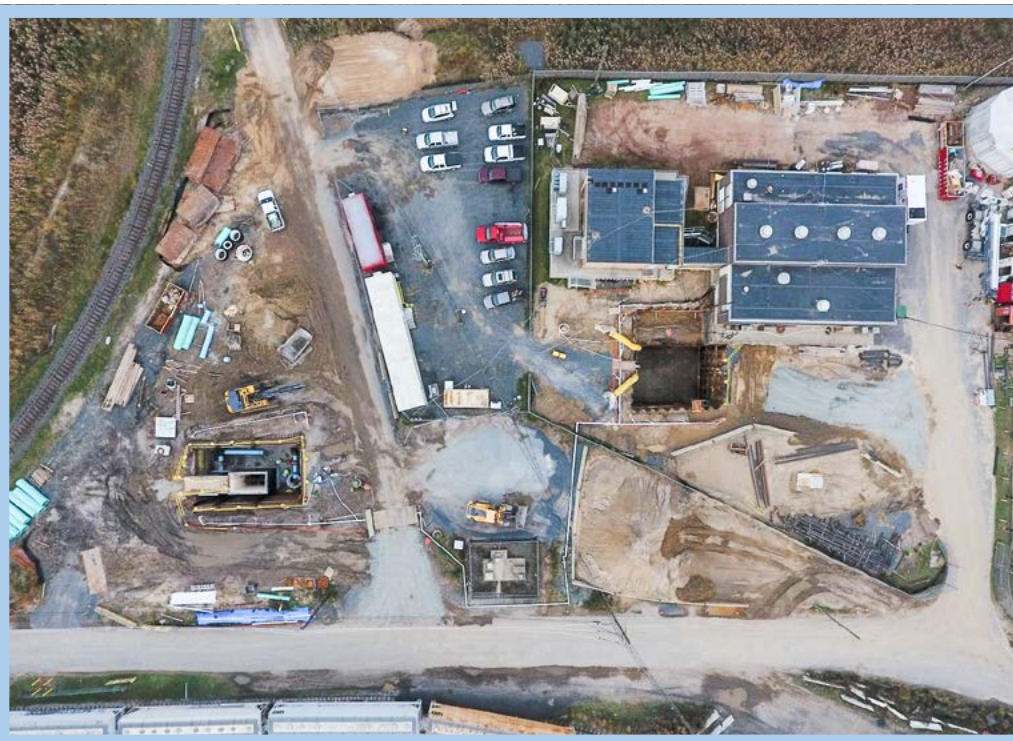
WASTEWATER DIVISION

Progress Continues at Edison Pump Station



**Edison
Pump Station
in July 2017**

Critical repairs and upgrades are on track at the Edison Pump Station, where the MCUA's contractor will construct a perimeter flood wall 650 feet in length with a design top elevation of 23 feet above sea level.



**Edison
Pump Station
in October 2017**

WASTEWATER DIVISION

FEMA Funding Update

Following the extensive damage caused by Hurricane Sandy – including vast flooding and the near-total destruction of the electrical equipment at the Sayreville and Edison Pump Stations – the MCUA, with the support of the Middlesex County Board of Freeholders, engaged state legislators, and officials in state and federal agencies to secure the funding for critical repairs and upgrades.

The total cost for repairs to the Sayreville Pump Station are estimated to be \$85.8 million, of which \$11.5 million has been expended through September 2017. Approximately \$78 million of the amount is FEMA eligible. FEMA will cover \$70 million with 90% grant funding, and \$15 million will

be financed through the New Jersey Environmental Infrastructure Trust.

The total cost for repairs to the Edison Pump Station are estimated to be \$34 million, of which \$7.2 million has been incurred through September 2017. Approximately \$19 million of the amount is FEMA eligible. FEMA will cover \$17 million with 90% grant funding, and another \$17 million will be financed through the New Jersey Environmental Infrastructure Trust.

“The damage sustained in 2012 as a result of Hurricane Sandy was enormous,” said Richard Fitamant, the MCUA’s Executive Director. “We’re grateful to our partners at all layers of government, especially the Middlesex County Board of Freeholders, for supporting us

through this process. We continue to provide efficient services to protect our ratepayers, infrastructure, and environment and are committed to doing so for decades to come.”

Wastewater Division October 2017 Statistics

- Average Influent flow – 90.29 mgd
- Average Effluent TSS – 15 mg/l
- Average Effluent BOD – 12 mg/l
- Biosolids production – 13,122 wet tons. Approximately 10,498 tons were processed through the dryers, and 2,624 tons were lime stabilized and disposed out of state. The dryers were down from October 13th through the 19th for the fall major maintenance outage.

**Rainfall for the month was 4.99 inches as measured at the plant.*

Repairs at the Edison Pump Station.



Solid Waste Division October 2017 Tonnage Figures

	Monthly Tons	Cumulative Tons
2017	44,187	459,473
2016	44,319	441,719

An average of 260 trucks hauled an average of 1,787 tons of waste to the Landfill facility each day.